

Identifying Poverty in the California Child Support Caseload



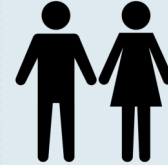
Informing policies such as Disregard/Excess



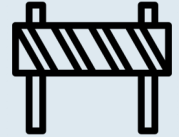
Understanding the impact of enforcement on poverty levels



Setting appropriate orders



Customizing service offerings for both parents



Understanding barriers to payments

The Process for Identifying Poverty

Step 1

Research the current nationally recognized poverty measures and apply them to the child support caseload to learn if any can be used.

Step 2

Leverage the most applicable measure to create a child support specific prediction model that estimates poverty for both parents.

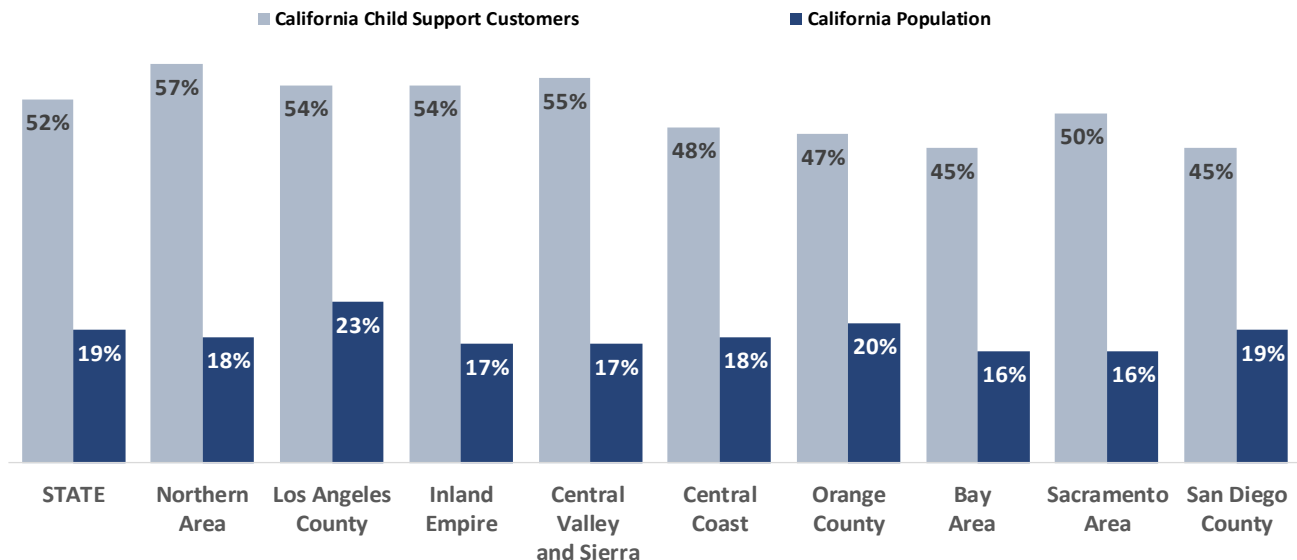
Step 3

Apply the prediction model to the caseload resulting in poverty predictions for both parents.

California State and Regional Estimated Poverty

Estimated Percentage of People in Poverty

(n=1 million California child support customers and 38.4 million people in California population)



Note: Child support customer sample includes non-custodial parents and custodial parents who have the following characteristics: case has a child support order in October 2019, customer lives in California, case is a IV-D case, case is not a foster care case, and youngest dependent is active on the case.

WHAT WE LEARNED



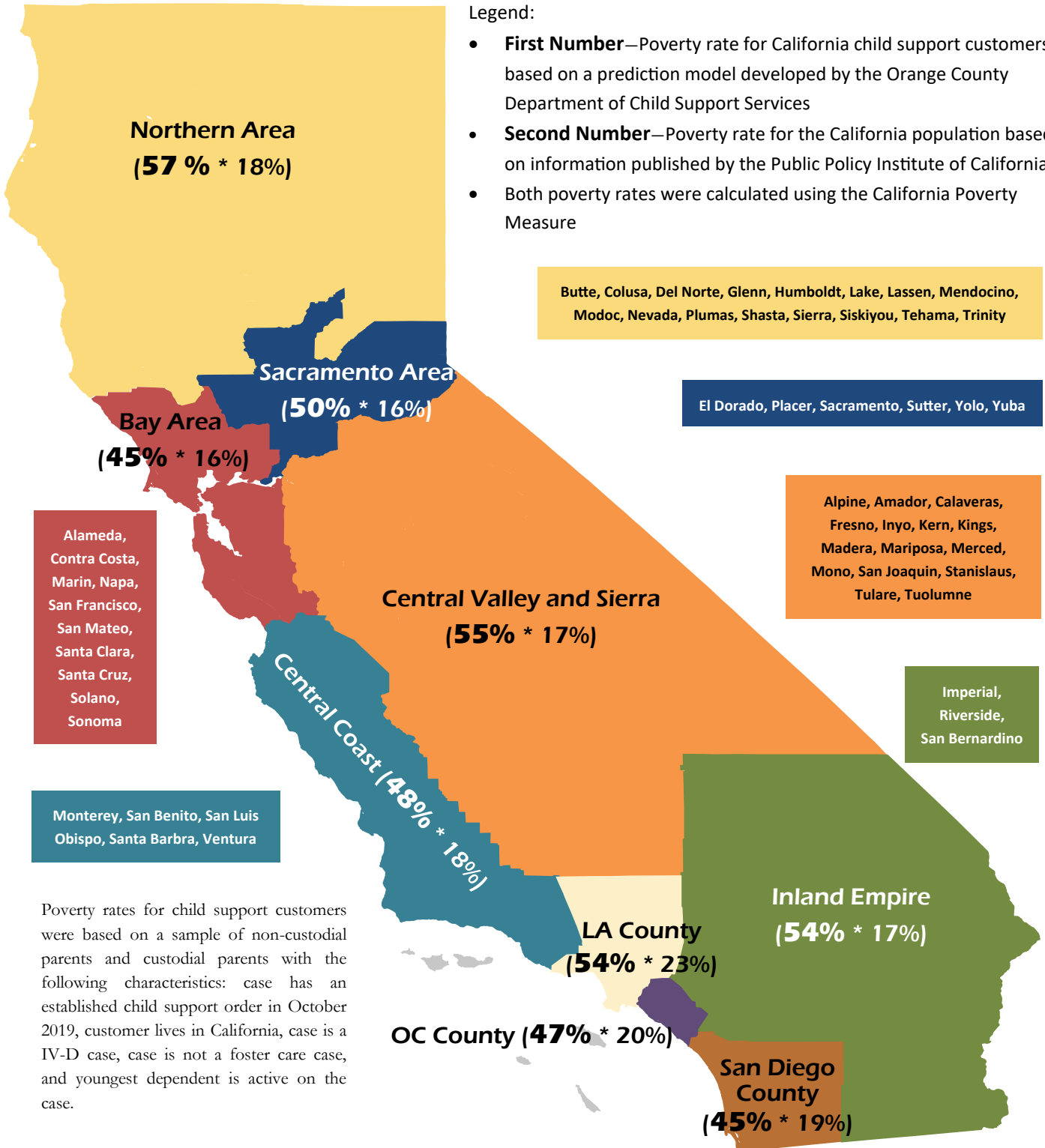
The Poverty Rate in the California Child Support caseload is higher than the general public



The Poverty Rate is 52% Statewide for the Child Support caseload

Legend:

- **First Number**—Poverty rate for California child support customers based on a prediction model developed by the Orange County Department of Child Support Services
- **Second Number**—Poverty rate for the California population based on information published by the Public Policy Institute of California
- Both poverty rates were calculated using the California Poverty Measure



Poverty rates for child support customers were based on a sample of non-custodial parents and custodial parents with the following characteristics: case has an established child support order in October 2019, customer lives in California, case is a IV-D case, case is not a foster care case, and youngest dependent is active on the case.

What are the nationally recognized poverty measures?



Official Poverty Measure



Federal Poverty Guidelines



Minimum Basic Standard of Adequate Care



HUD eligibility for assisted housing programs



Supplemental Poverty Measure



PPIC

PUBLIC POLICY INSTITUTE OF CALIFORNIA

STANFORD CENTER ON POVERTY & INEQUALITY



California Poverty Measure

Why can't one of the existing measures be used to identify parents in poverty?

Reason #1

When the measures were applied to the child support cases the results were disparate. Upon case validation, there was a high rate of inaccuracy.

% of Caseload in Poverty

POVERTY	POVERTY	POVERTY	POVERTY	POVERTY	POVERTY
19%	34%	35%	53%	59%	87%
Minimum Basic Standard of Adequate Care	Official Poverty Measure	Federal Poverty Guidelines	Supplemental Poverty Measure	California Poverty Measure	HUD eligibility for assisted housing programs

Reason #2

All of the measures require data that is not captured or archived in child support case files.



For more information contact:

Steven Eldred, Director, Orange County Department of Child Support Services
SEldred@css.ocgov.com